


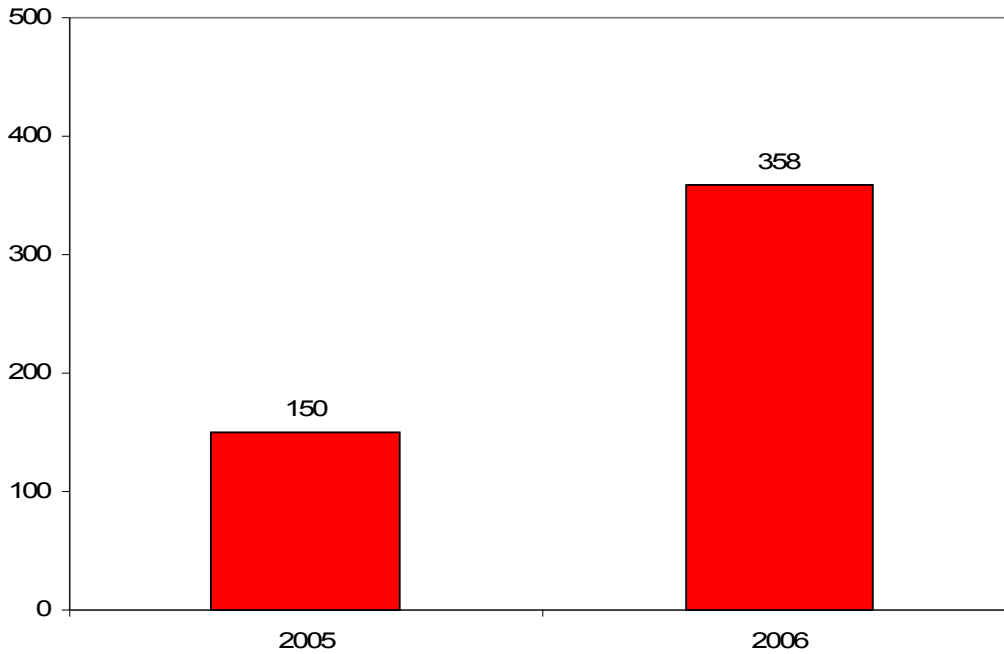


IMPact Report: Summary Analysis of IM & P2P Threats in 2006

FaceTime Communications

Recommended slides

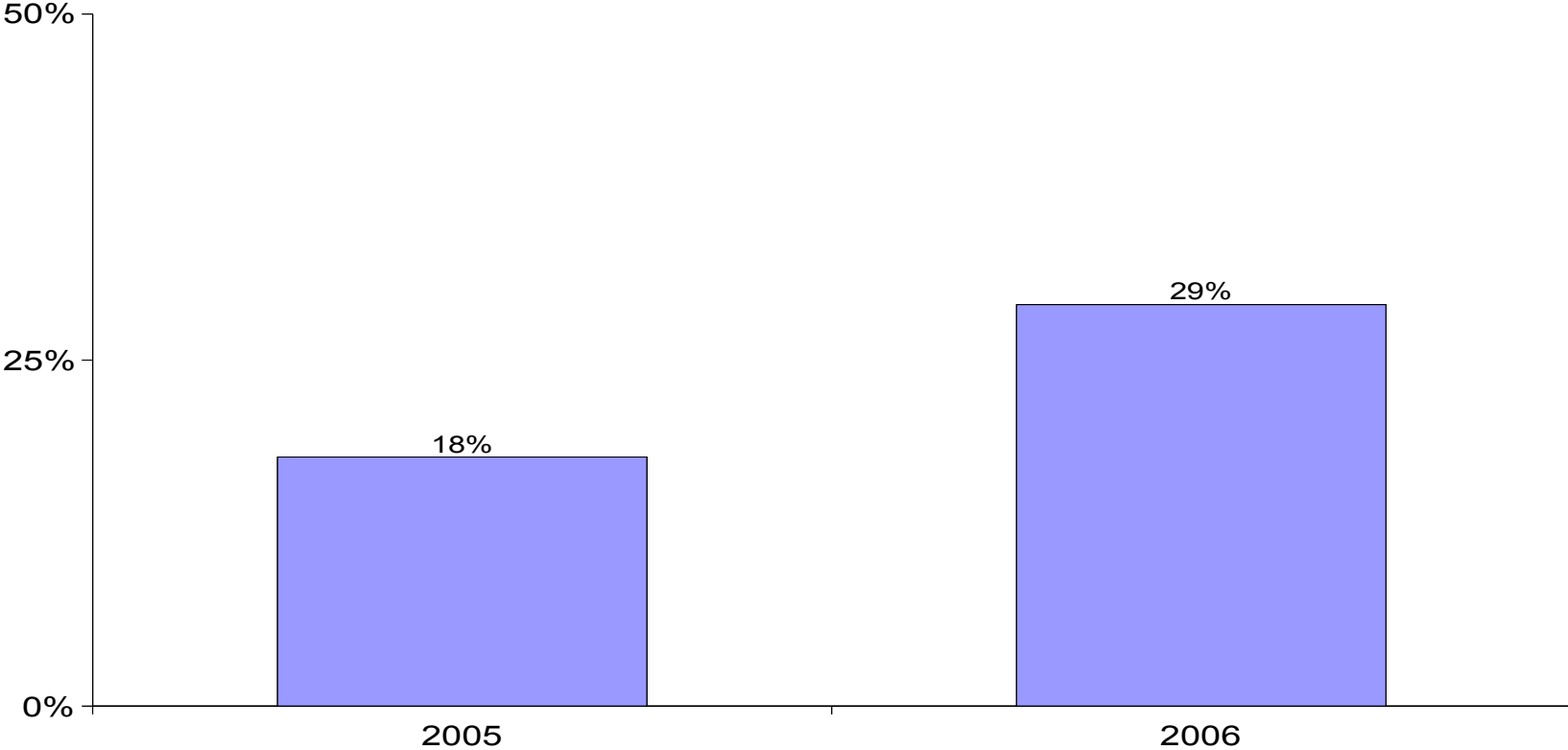
P2P Incidents



Year on year P2P attacks have more than doubled from 2005 to 2006. This represents an annual growth rate of almost 140 percent.

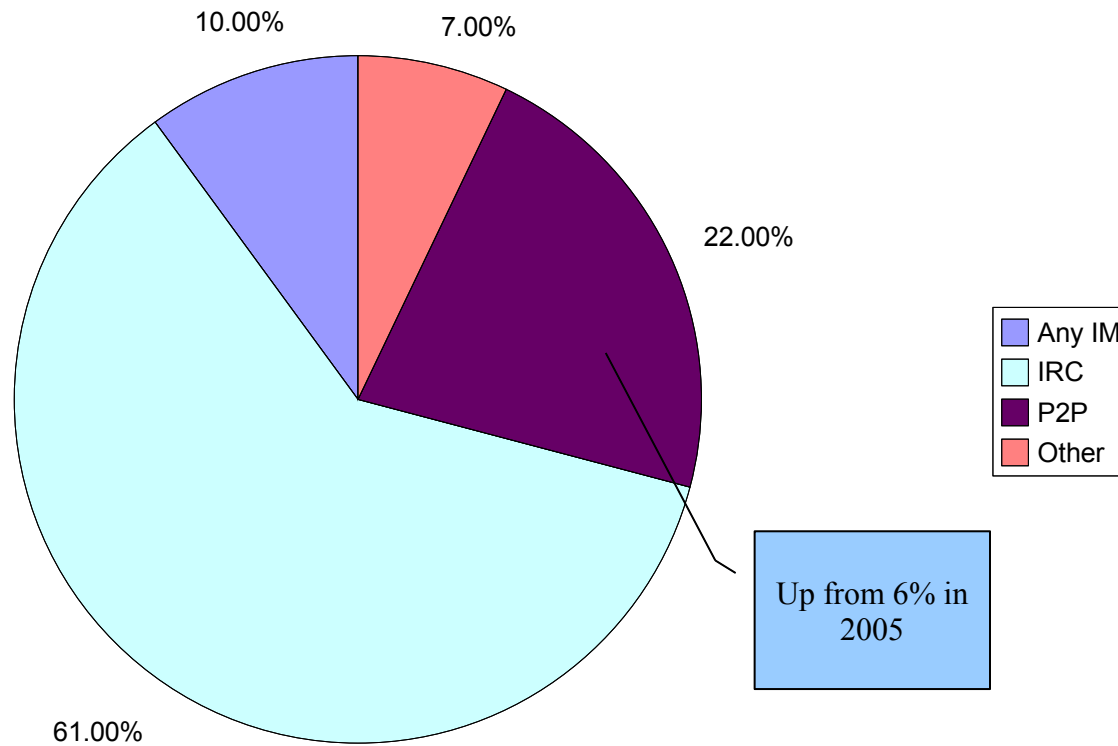
Source: FaceTime Security Labs, 2006 data

Multi-channel attacks, as a proportion of all attacks, increased dramatically from 2005 to 2006

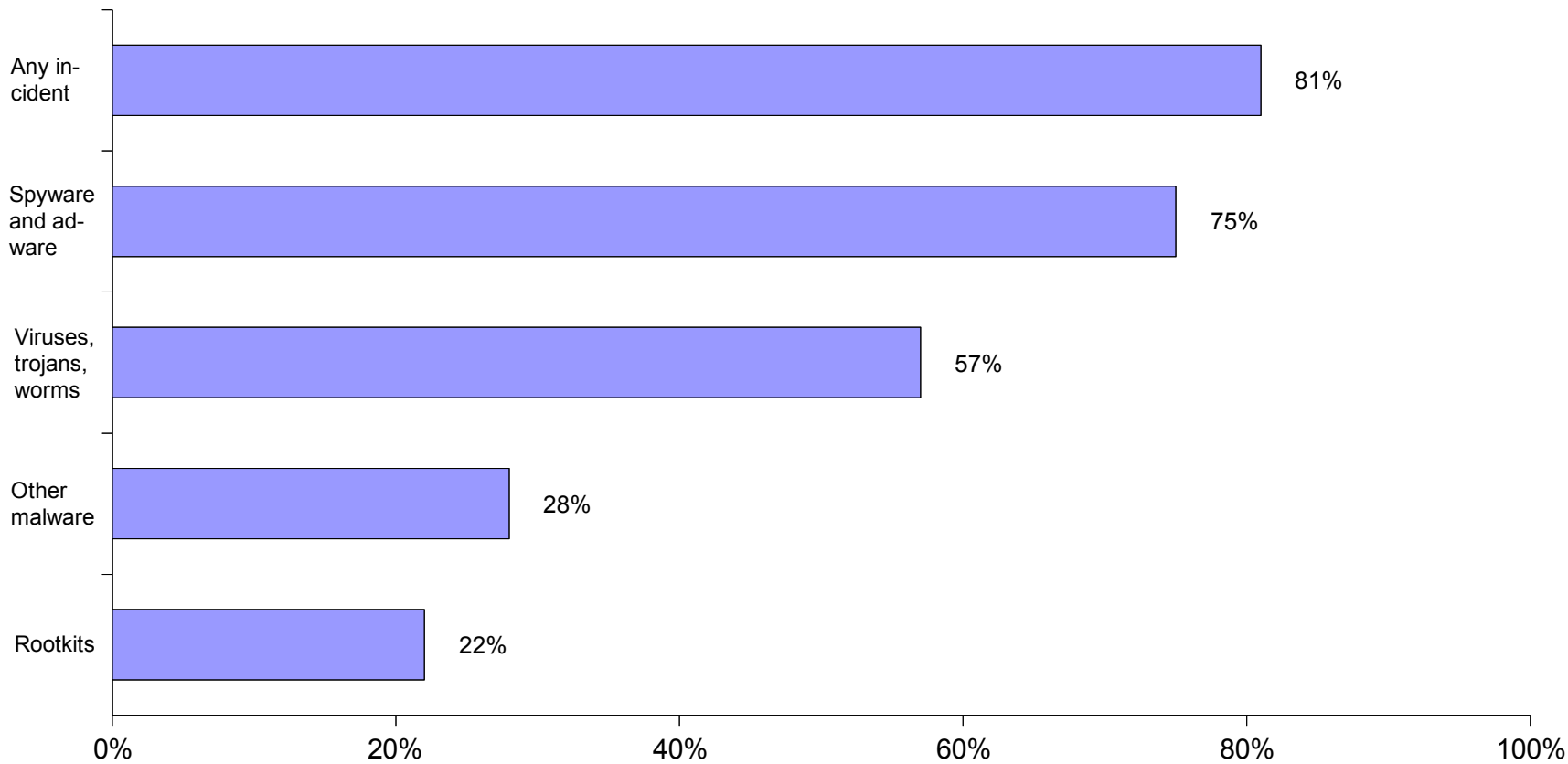


Source: FaceTime Security Labs, 2006 data

P2P Share Increases

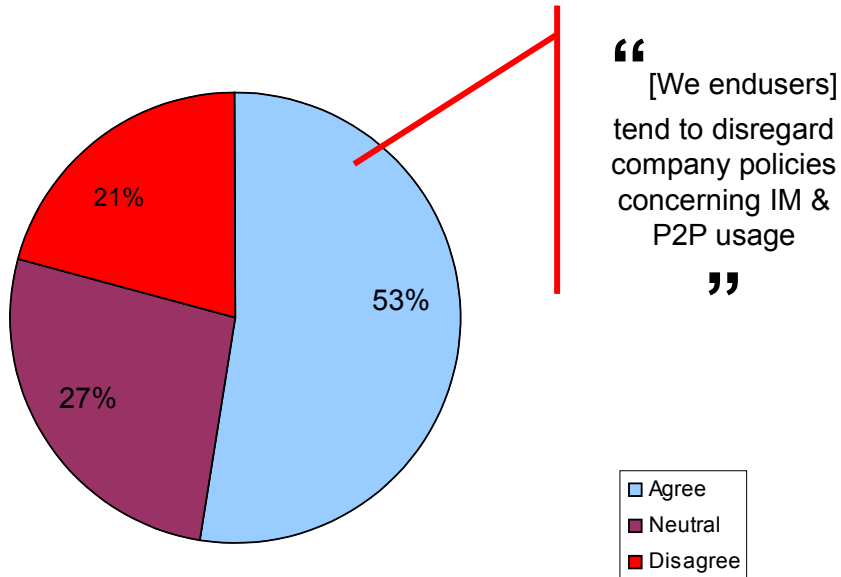


Source: FaceTime Security Labs, 2006 data

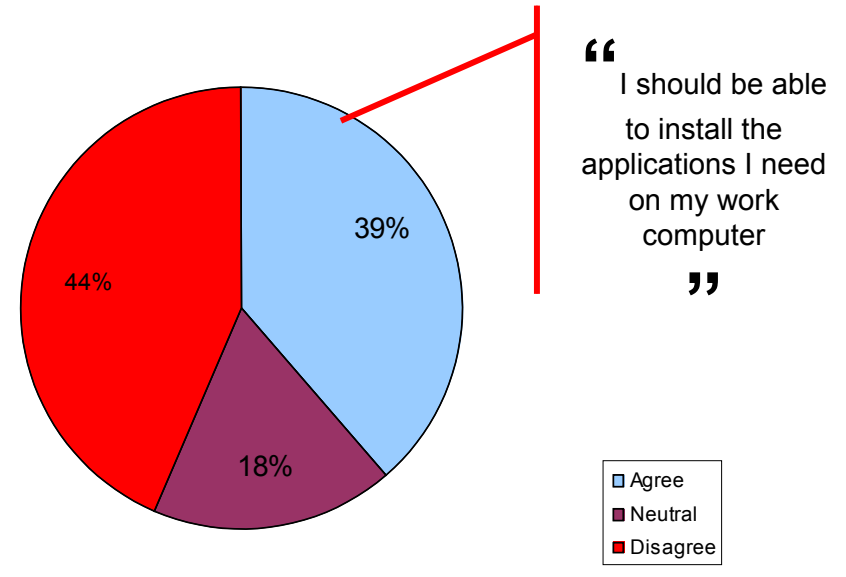


Source: FaceTime Greynets II, Oct 2006

Enduser Attitudes About Greynet Usage



Base: Endusers

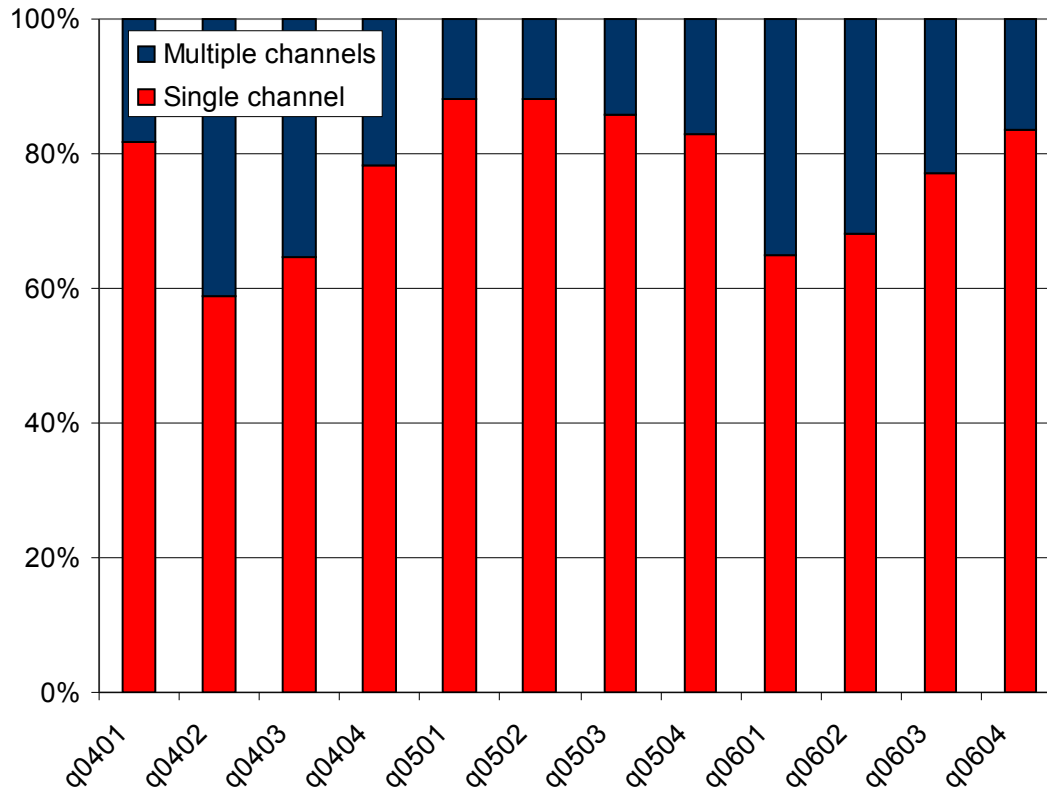


Base: Endusers

Source: FaceTime Greynets II, Oct 2006

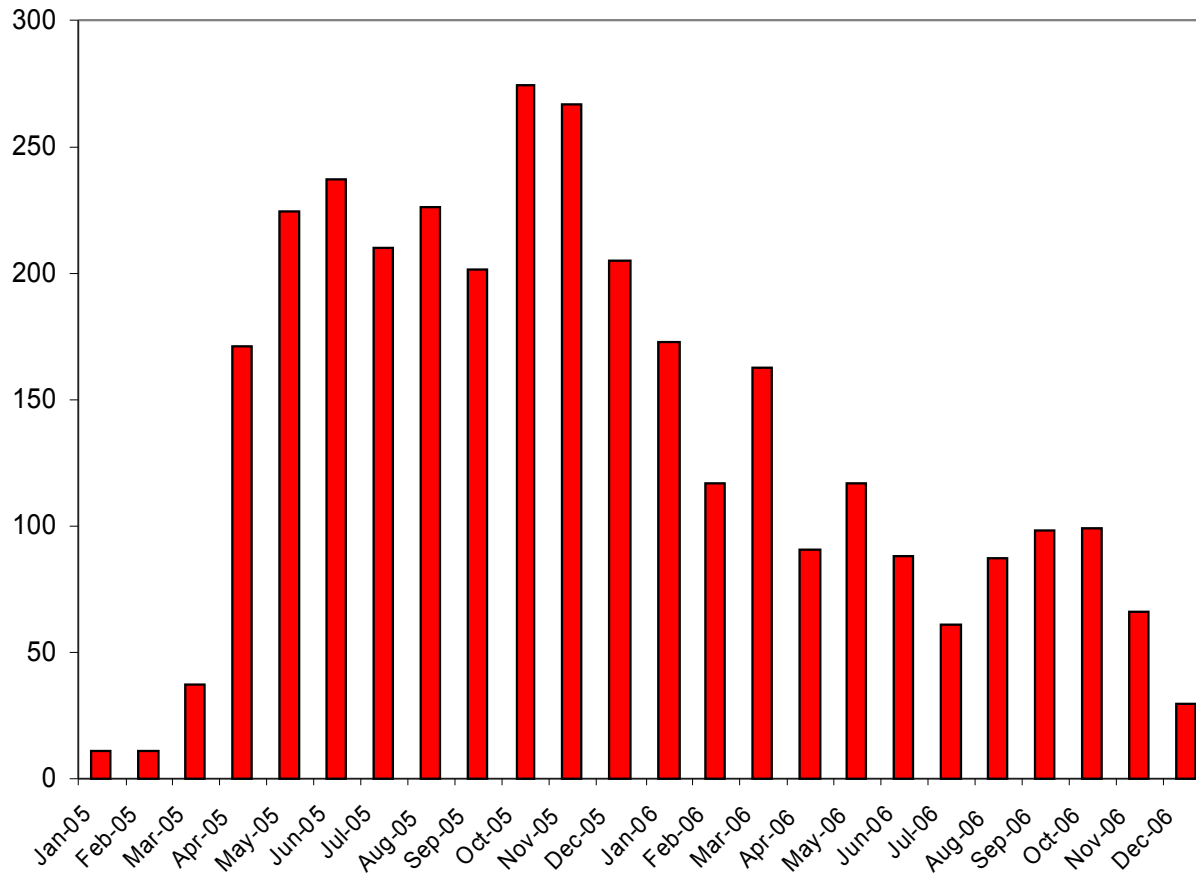
Other slides

Share of Single vs. Multi-channel Attacks



Source: FaceTime Security Labs, 2006 data

Monthly Incident Report



Quarterly Incidents

